



ARDEX AMERICAS

ARDEX K 525 - Self-Leveling Concrete Topping with Dark Aggregate Surface

ARDEX K 525™: Self-Leveling Concrete Topping with Dark Aggregate Surface
ARDEX K 525™ is the latest addition to the K 520 series, designed for fast-track resurfacing of indoor concrete. This self-leveling topping offers high performance, versatility, and an aesthetic, polished finish with an exposed dark aggregate surface. Ideal for professionals seeking a smooth, durable floor - it enhances both appearance and longevity. Key Features and Applications ARDEX K 525™ self-levels for easy installation, ensuring a smooth, even surface. It can be applied from 3/8" (9 mm) to 2" (5 cm), making it adaptable for various projects. Whether resurfacing or creating a new floor, it provides a robust foundation for commercial, industrial, and institutional spaces, handling heavy foot traffic with ease. What sets it apart is its soft grey base and unique dark aggregate finish, creating a modern, sophisticated look. Polishing can begin within 24 hours, allowing for fast turnaround times on tight deadlines. Fast-Track Resurfacing and Ease of Use Designed for efficiency, ARDEX K 525™ sets quickly, enabling surface polishing just 24 hours after application. ARDEX has collaborated with major tooling manufacturers to refine the polishing process, reducing steps while maintaining a high-quality finish. Aesthetic Appeal with Durability The polished dark aggregate surface creates a visually striking contrast, making it an excellent choice for retail spaces, showrooms, and offices. Beyond aesthetics, ARDEX K 525™ delivers a durable, hardwearing finish that withstands high traffic, ensuring both beauty and longevity. With ARDEX K 525™, professionals can achieve stunning, long-lasting floors with efficiency and ease.

Visit <https://www.ardexamericas.com/ardex-k-525/>.



BOSTIK

STIX® 2199 TRANSITIONAL MULTI-USE ADHESIVE

Stix® 2199 is a solvent-free, transitional adhesive with aggressive tack designed for the installation of vinyl- and non-vinyl-backed modular carpet tile, luxury vinyl tile (LVT), luxury vinyl plank (LVP), VCT, vinyl sheet flooring, and fiberglass-reinforced vinyl sheet. Stix 2199 is made with MicroSept® Advanced Antimicrobial System to protect the adhesive from bacterial and fungal growth. When used with carpet tiles, this adhesive is formulated for releasing and re-bonding while permanently retaining its tack, allowing individual tiles to be lifted out and replaced without substantial loss of adhesive properties. When used with vinyl tile, vinyl plank, and vinyl sheet flooring, Stix 2199 provides a tenacious bond.

Visit <https://xlbrands.com/product/stix-2199/>

VERSABOND

VERSABOND®: NOW BIGGER AND BETTER

VersaBond® Professional Thin-Set Mortar – The #1 selling tile mortar, known for its proven reliability and strength. This trusted formula delivers excellent adhesion and versatility across various tile types and substrates. VersaBond®-LFT Professional Large Format Tile Mortar – Designed for large-format tile (LFT) installations, this improved formula now features enhanced non-sag properties, making it ideal for wall applications. It meets ANSI A118.4T standards, ensuring high performance.

VersaBond®-LFT RS Professional Rapid Setting Large Format Tile Mortar – When time is critical, this rapid-setting formula is the solution. Engineered for LHT (Large and Heavy Tile) applications, it provides extended working time while allowing grouting in under two hours—maximizing efficiency on fast-track projects.

VersaBond® LITE Professional Large and Heavy Tile Mortar – The lightweight solution for heavyweight tile installations! This LEED-certified mortar delivers exceptional workability, coverage, and ease of troweling, making it a contractor favorite for large and heavy tile applications. With the expanded VersaBond® family, installers can select the perfect mortar for their project needs—whether it's thin-set, large format, rapid set, or lightweight mortar solutions. When performance, versatility, and reliability matter, VersaBond® delivers.

For more details, visit: www.custombuildingproducts.com.



i4F

i4F CERA-GROUT: MIMICS PERFECTLY THE BEAUTY OF CERAMIC-LOOKING FLOORS AND WALLS WITHOUT THE INCONVENIENCE

i4F CeraGrout is an innovative technology designed to enhance the aesthetics and functionality of modern flooring and wall solutions. It perfectly mimics the look of high-end rectified ceramics while integrating grout lines seamlessly into the tile or panel itself. This eliminates the need for traditional grout application, making installation significantly easier and faster. One of the standout benefits of i4F CeraGrout is its superior durability. Unlike conventional ceramic tiles, which require grout maintenance over time, this technology provides a robust and long-lasting solution that resists wear and tear, stains, and exposure to household chemicals. This ensures that floors and walls retain their beauty and structural integrity for years with minimal upkeep. Another key advantage of i4F CeraGrout is its ease of installation and replacement. Traditional ceramic tiles often require extensive preparation, precise grout application, and long drying times. In contrast, tiles and panels featuring i4F CeraGrout can be installed much more quickly, reducing labor costs and minimizing downtime in residential and commercial spaces. Should a tile need replacing, the process is far more straightforward than with traditional ceramics. Beyond functionality, i4F CeraGrout offers significant design versatility. It allows for a seamless transition from floors to walls, opening new possibilities for interior design. This technology enables manufacturers to extend their flooring collections to wall applications, providing a cohesive and modern aesthetic across different surfaces. Overall, i4F CeraGrout represents a game-changing innovation in the flooring industry, combining beauty, durability, and ease of use. By eliminating the drawbacks of traditional grout while maintaining the luxurious appearance of ceramic tiles, it offers an advanced solution for homeowners, designers, and builders looking for a practical yet stylish flooring and wall solution.

Visit: <https://pages.i4f.com/i4f-ceragrout>





IUPAT

IUPAT Training: Elevating Standards for Floor Covering Contractor

The floor covering industry is evolving and staying competitive means having a skilled workforce. The International Union of Painters and Allied Trades (IUPAT) provides contractors with highly trained professionals through its rigorous apprenticeship and training programs. IUPAT apprentices undergo 8,000 hours of on-the-job training and 800 of classroom instruction, covering safety, OSHA certifications, and advanced installation techniques. This ensures contractors get reliable, efficient, and safety conscious installers, reducing costly errors and project delays. The annual IUPAT International Apprenticeship Competition at The International Surfaces Event (TISE) showcases the industry's top talent. This year, Edgar Lopez from IUPAT District Council 16 won the Floor Covering Apprentice Championship, demonstrating the precision and craftsmanship that IUPAT - trained professionals bring to every job. For contractors, hiring IUPAT - trained professionals means gaining workers who are ready from day one. Unlike non-union training, where installers often fund their own education, IUPAT's program is backed by labor-management agreements, easing the financial burden and ensuring consistent, high-quality training. IUPAT also collaborates with manufacturers to keep training aligned with the latest industry advancements, ensuring that contractors improve efficiency, workmanship, and overall business success. Partnering with IUPAT contractors a competitive edge in an evolving market.

Visit: <https://www.iupat.org/trades/floor-coverer/>.



KOSTER

KOSTER VAP I® 2000 ZERO VOC – ADVANCED MOISTURE CONTROL COATING

For projects demanding a durable, environmentally responsible, and easy-to-apply moisture control solution, KOSTER VAP I® 2000 Zero VOC is the ultimate choice. KOSTER VAP I® 2000 Zero VOC is a high-performance, one-coat moisture control system designed to prevent flooring failures due to excessive moisture in concrete slabs. Formulated with a unique blend of epoxy resins, this advanced coating creates a dense, impermeable membrane that significantly reduces moisture vapor transmission. With 0 g/L VOCs, KOSTER VAP I® 2000 Zero VOC meets all state and federal environmental regulations, making it an ideal solution for sensitive areas such as hospitals, schools, and grocery stores. It also contributes to LEED credits for Low-Emitting Materials (EQ 4.2). This moisture mitigation system is tested to exceed ASTM F3010-13 standards, providing an industry-leading moisture vapor permeance of less than 0.1 perms. Unlike traditional moisture barriers, it requires no moisture testing before application and can be installed on concrete with relative humidity (RH) levels up to 100%. Designed for efficiency, KOSTER VAP I® 2000 Zero VOC applies in a single coat at a minimum thickness of 11 mils and fully cures within 12 hours. It is compatible with a wide range of flooring systems, including vinyl, carpet, wood, rubber, and polymer coatings.

For more information, visit kosterusa.com or contact our technical team at techsupport@kosterusa.com

LATICRETE

SELF-LEVELING UNDERLAYMENT SOLUTIONS FOR FIRE-RATED CONSTRUCTION – NXT® LEVEL, NXT LEVEL FLOW, AND SUPERCAP® SC500 / SC500-PLUS

When fire safety and performance matter, LATICRETE® UL-certified cement-based self-leveling underlayments (SLUs) deliver fast project completion and long-lasting durability. These cement-based SLUs achieve up to 2 hours of fire resistance in floor-to-ceiling assemblies, ensuring building code compliance while simplifying installation. Unlike traditional gypsum-based underlayments, LATICRETE SLUs cure faster, are more durable, have superior water resistance, and can be applied directly over adhesives—without requiring a sealer. Simply choose your preferred SLU, walk on surfaces in just 1, 2, or 3 hours, and install final flooring in as little as 16 hours, keeping projects on schedule. Why Choose LATICRETE Fire-Rated SLUs?

- UL-Certified for Fire Resistance – Up to 2 hours in fire-rated floor-to-ceiling assemblies
- Fast Cure & Walkability – Walkable in 1-4* hours with floor coverings in as soon as 16 hours
- High Strength & Durability – Long-lasting and resists construction traffic
- Superior Water Resistance – Ideal for all interior environments
- Direct Adhesive Compatibility – No extra steps, no sealers required

Ideal for multifamily, high-rise buildings, hospitals, schools, and various commercial spaces, LATICRETE SLUs provide trusted performance for critical fire-rated applications. Proven. Certified. Trusted. Choose LATICRETE UL-certified fire-rated SLU solutions to help meet compliance standards while accelerating project timelines. *Walk-on times vary by SLU selected.

For more details, visit: https://www.laticrete.com/en/our-products/concrete-and-substrate-preparation/self-leveling-underlayments#-filterproduct_e=0.



LOBA WAKOL

WAKOL PU 280 MOISTURE BARRIER

WAKOL PU 280 is a one-component polyurethane moisture control barrier and primer for absorbent and non-absorbent substrates approved for residential and commercial applications. One coat will suppress moisture up to 90% relative humidity and two coats will suppress moisture up to 100% relative humidity. You will achieve up to 400 sq. ft. per gallon with the LOBA Roller Micro 60-80. WAKOL PU 280 Moisture Barrier is available in a 1 Gallon and 2.5 Gallon unit. Hands-on training classes are available and listed on our website. WATCH WAKOL PU 280 being applied on our Loba Wakol YouTube Channel. <https://www.youtube.com/watch?v=9tey7uP8zvQ>.

Visit: <https://www.wakol-usa.com/us/PM/Products/Substrate-Preparation/WAKOL-PU-280>.





MAPEI

ULTRABOND ECO 307: HARD-SETTING ADHESIVE FOR RESILIENT FLOORING

MAPEI's Ultrabond ECO 307 is a proprietary, hard setting, water-based, acrylic polymer formulation designed for the permanent installation of all types of resilient flooring, including luxury vinyl tile (LVT) and luxury vinyl plank (LVP), and solid rubber sheet and tile flooring. Highly moisture resistant, Ultrabond ECO 307 provides a hard-set to deliver ultimate gap control and rolling load resistance.

For more information about Ultrabond ECO 307 or other MAPEI products, visit www.mapei.us



MAXXON

MAXXON COMMERCIAL ISOLATE

Maxxon® Commercial Isolate protects flooring systems by blocking the migration of moisture, destructive abatement chemicals and other absorbed contaminants. Easy to apply - roll directly onto properly prepared concrete, existing cutback adhesives, or well-bonded VAT, VCT and ceramic tiles. Achieve moisture protection on difficult and contaminated slabs.

Visit MAXXON : https://maxxon.com/products/isolate/?utm_source=FCI-CA&utm_medium=digital&utm_campaign=March+2025_FCI+Digital+Ad



MOHAWK

MOHAWK GROUP'S LINK STEP

Link Step brings more than just flooring to a space – it tells a story of design, inclusivity, and transformation. Crafted to merge elegance with accessibility, it's a collection born from the belief that everyone deserves to live in beautiful, well-designed spaces. With Link Step, each step becomes part of a larger narrative, where thoughtful design meets aspiration, and where individuality is celebrated within the harmony of a shared environment.

Link Step offers three distinct styles – Solid Bonds, a timeless wood visual; Shared Strides, a textured striated wood; and Harmonic Waves, an abstract design inspired by nature's fluidity. Each plank or tile, available in two versatile sizes, becomes a canvas of possibility, creating spaces that feel both personal and universal.

The curated color palette, from soft, calming neutrals to bold, energizing hues, enhances any space, making it warm and inviting. Link Step offers more than durability – it offers a sense of belonging, a chance to step into a space where design embraces life's unique and shared moments.

Learn more at: www.mohawkgroup.com

NOVALIS

BIGGER. BOLDER. BRIXTON.

Bigger. Bolder. Best of the best. NovaFloor's most premium collection to date, Brixton is putting the luxe in luxury vinyl flooring, with generous estate-sized planks and a sophisticated color palette made up of four of our best-selling visuals and four brand new visuals. Perfect for the modern traditionalist, Brixton is available in highly sought-after wider, longer 9" x 60" rigid core planks, offering exceptional strength, superior performance, and enduring style. With rich, realistic detailing, tone variation, and natural texture, you'll enjoy the classic beauty of wood with all the benefits of vinyl, including our proprietary NovaShield protection against scratches, scuffs, stains, and spills. All Brixton styles include an attached underlayment for premium comfort underfoot.

For more details, visit: <https://novafloor.us/brixton-tech-data>



THE ADHESIVE GROUP

TAG: THE FUTURE OF FLOORING ADHESIVES, BY PFS

The Adhesive Group (TAG) is more than a brand – it's a movement. Born from a reunion of Professional Flooring Supply and the brilliant minds behind the industry's most trusted adhesive technologies, TAG represents a bold new chapter in flooring solutions. At TAG, we know that great flooring starts with a strong foundation. We've engineered our adhesives to set the industry standard for performance and value. Our team of experts has decades of experience, and we've used that knowledge to develop products that professionals can rely on—no matter the project size or complexity. We didn't just create adhesives. We created solutions. By asking the right questions and listening to the needs of installers, contractors, and designers, we've developed a full range of high-performance products, including:

- Pressure-sensitive adhesives
- Multi-purpose adhesives
- Vinyl Composition Tile (VCT) adhesives
- Hardwood adhesives
- Cove base adhesives
- Universal substrate primers
- Moisture mitigation solutions

Whether it's a high-traffic commercial space or a custom residential project, TAG adhesives deliver unmatched strength, flexibility, and efficiency. But TAG is more than just great products. It's great people, great partnerships, and a commitment to performance that never wavers. We stand behind everything we create, ensuring that professionals have the reliability and confidence they need to get the job done right. No project is too big. No need is too small. TAG was created with the professional in mind, and we're ready to prove it. Put your trust in TAG. We'll deliver the rest. TAG. We're it.

Visit: <https://www.theadhesivegroup.com/>





PROTECT-ALL RESILIENT VINYL FLOORING

Weight rooms and fitness centers require a durable flooring product that can hold up under repetitive action. As a recycled vinyl weight room flooring product, Protect-All® can withstand the toughest challenges such as extreme dead-weight loads, repetitive heavy impact and high-traffic patterns. Protect-All's vinyl construction is designed to withstand diverse weight loads and temperatures, making it a great flooring solution throughout an entire athletic facility. Its durable design effectively resists impacts and punctures, even in high-traffic areas, while still providing comfort underfoot. This design helps prevent the floor from being dented but still offers a soft surface for the most demanding workouts. The flooring's nonporous construction can handle bodily fluids without staining or leaving unpleasant odor behind after cleaning. Protect-All flooring absorbs sound, fostering a tranquil environment often sought in fitness facilities. It boasts high resistance against chemicals, mildew and bacteria, enhancing hygiene and durability. Crafted from more than 90% recycled materials, Protect-All is proud to play a role in diverting millions of pounds of vinyl waste from landfills each year. By choosing Protect-All, you not only opt for an aesthetically pleasing and durable flooring solution but also contribute to sustainability efforts. Opting for durability doesn't mean compromising on design. Protect-All offers endless opportunities for customization with our Designer Series line of flooring solutions, so you can have a floor that looks as good as it performs. High-quality, beautiful and functional flooring delivering exceptional value so you can put your best foot forward. That's Protect-All.

Visit: <https://protect-allflooring.com/>



SCHÖNOX MOISTURE PROBLEMS? SOLVED IN ONE STEP WITH SCHÖNOX MBL

Level Cementitious floors and protect against residual moisture in one step with Schönox MBL. Schönox technology has developed yet another patented subfloor solution. Schönox MBL is a revolutionary 2-part moisture blocking self-leveling compound engineered for cement and concrete substrates that are susceptible to residual moisture issues. MBL provides a smooth surface for the installation of carpet tile, LVT, and other resilient flooring while providing moisture mitigation up to 99% RH / 18lbs. Mix 1 unit of Schönox MBL powder (Part A) with 1 unit of Schönox MBL liquid and pour from 1/8" up to 1/2". Moisture problems? Solved - in one step.

Visit <https://hpsubfloors.com/products/schonox-mbl/>

SPRAY-LOCK

SPRAY, SET, GROUT IMMEDIATELY

Spray-Lock Wall Tile Adhesive is one of the most innovative products for setting wall tile that you may not know about. Spray-Lock pioneered high moisture, water-based spray flooring adhesives and were challenged to develop a Wall Tile Adhesive with our zero VOC spray technology. The Wall Tile Adhesive went through TCNA testing and has a type 1 shower rating. Spray-Lock's Wall Tile Adhesive allows:

- No sagging of tiles
- Ability to see reference lines through the adhesive
- Start setting tile 5 minutes after you spray
- 1 hour working time
- Grout Immediately
- Install over porous and non-porous
- Can be installed over glass and existing tile

Complete your next wall tile installation on day ONE with Spray-Lock Wall Tile Adhesive. Visit <https://spraylock.com/wall-tile-adhesive/>



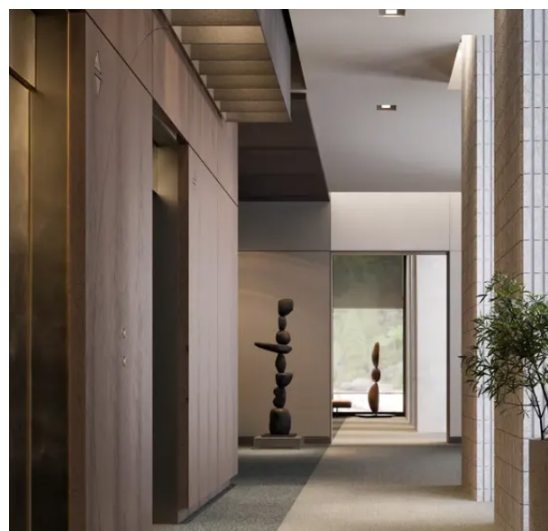
TARKETT

TARKETT LAYERED DUALITY NON-PVC PLANKS AND TILES

Layered Duality focuses on the combination of diverse textures and colors to create a dynamic and balanced sense of unity. The collection blends contrasting aesthetics and a mindful approach to materials to create a distinctive level of harmony—providing comfort, inspiration, and unmatched visual interest.

Choose from four carpet tile styles and two non-PVC plank styles in a variety of enticing neutrals, colors, and textures that bring harmonic allure to any space. The non-PVC plank and tile styles offer smart solutions that are ortho-phthalate free, Living Building Challenge (LBC) Red List Free, and rival LVT in performance and aesthetics.

For more information, visit: <https://commercial.tarkett.com/collections/layered-duality>



TEC

TEC® LIQUIDAM EZ

Only TEC® LiquidDam EZ™ offers a choice of 1-coat or 2-coat coverage with the highest moisture protection available combined with fast-track installation over green concrete as new as 48 hours old at 100% RH. Plus, it primes, blocks alkalinity and 1 coat dries in 90-120 minutes. Effective moisture mitigation and efficient installation – now that's working smarter with TEC.

- Two Protection Levels
- 2 Coats: 100% RH, 25 lbs MVER
- 1 Coat: 95% RH, 15 lbs MVER
- For concrete or wood subfloors
- 1-part non-hazardous water-based formula
- Roller or trowel application
- Primer and alkalinity blocker

Visit <https://www.tecspecialty.com/products/surface-preparation/liquid-am-ez/>.





TRAXX

PROTEXX-ST™ The Next Step In Surface Protection

PROTEXX-ST™ is a stay-in-place reusable surface protection that is topped off with a protective film barrier to prevent liquid spills from penetrating through! It's quick and easy to lay out, saving you time and effort. It is safe for most surfaces from hardwood, vinyl, tile, stone, carpet, concrete, kitchen islands, to counter tops and fixtures!

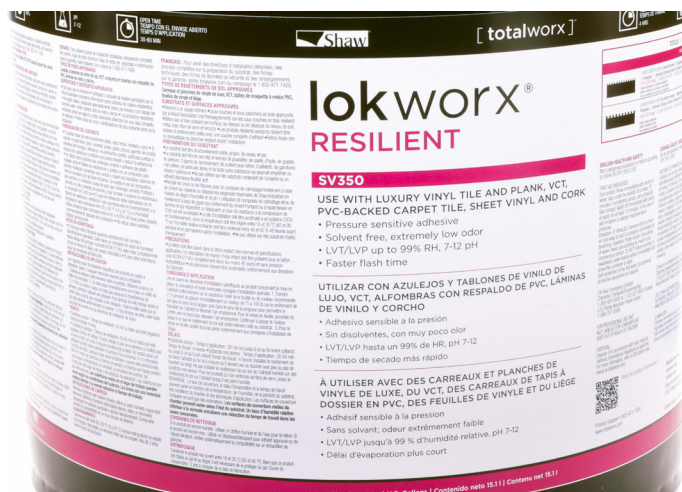
The benefits of using PROTEXX-ST™ are:

- Self-adhering quality means no taping!
- Anti-Slip
- Liquid Resistant
- Breathable
- Durable
- Impact Resistant
- Reusable / Recyclable
- One roll of 40-inches x 45-feet covers 150 square feet

Earn money with this cost-effective product! Use code DMO MASKFPB or WTR MASKFPB next time you're quoting a job in Xactimate® Product Number: PSP-ST40045.

Visit

Visit: <https://www.traxxcorp.com/protexx-surface-protection/>



TOTALWORX

TOTALWORX ACCESSORIES - SV350

Introducing SV350 Adhesive by TotalWorx Accessories, a top-tier pressure-sensitive adhesive designed specifically for residential fiberglass-backed sheet goods. With a faster flash time, this adhesive allows for quicker installations without compromising performance. Cradle to Cradle certified, SV350 adheres to environmentally friendly standards while delivering impressive coverage of 140-350 ft² per gallon. It can handle up to 99% RH, making it an excellent choice for moisture-prone areas. Available in convenient sizes of 1-gallon pails (144 pails per pallet) and 4-gallon pails (48 pails per pallet), SV350 Adhesive is the ideal solution for professional installers seeking efficiency and reliability in their projects.

Visit www.totalworx.com

WAGNER

RAPID RH L6 CONCRETE MOISTURE TEST

The #1 Trusted Concrete Moisture Test The Rapid RH® combines its patented Smart Sensor and innovative Total Reader for fast, easy-to-use, and fully ASTM-compliant RH testing. The Rapid RH® is superior to all other relative humidity measurement systems on the market today. It equilibrates faster than other concrete moisture testers, provides accurate results and meets the F2170-11 standard. It's so easy, it seems virtually automatic.

Visit <https://www.wagnermeters.com/concrete-moisture-test/>



UZIN

UZIN KE 2000 S – UNIVERSAL FLOORING ADHESIVE

UZIN KE 2000 S is a universal adhesive meticulously designed for the installation of various floor coverings on both absorbent and non-absorbent substrates. This adhesive stands out for its high shear strength, excellent resistance to plasticizers, and quick-drying properties, making it an ideal choice for fast and efficient installations. Its installer-friendly nature, combined with low odor and easy trowel application, makes it perfect for use in occupied buildings. Whether it's for residential or commercial settings, including healthcare and educational facilities, this adhesive provides reliable performance for a multitude of environments.

Highlights of UZIN KE 2000 S include:

- **High Shear Strength:** Ensures a robust and durable bond for a variety of floor coverings, providing peace of mind to installers and end-users alike.
- **Plasticizer Resistance:** Offers superior resistance to plasticizers, minimizing the risk of shrinkage and ensuring long-term stability.
- **Quick-Drying:** The adhesive's rapid drying time allows for fast installations, making it a time-efficient choice for projects with tight deadlines.
- **Low Odor:** Ideal for use in occupied buildings, ensuring minimal disruption and comfort for occupants.
- **Easy to Trowel:** The adhesive's low viscosity allows for smooth and effortless application, reducing installer fatigue and improving efficiency.
- **Versatile Application:** Suitable for use on a wide range of substrates, including concrete, vinyl, rubber, linoleum, and more. Its universal nature makes it a go-to choice for various flooring projects.
- **Wide Application Range:** Provides reliable performance across different environments, whether it's for residential or commercial settings, including healthcare and educational facilities.

UZIN KE 2000 S epitomizes efficiency and reliability in floor covering installations. Its blend of high performance, ease of use, and versatility makes it the perfect choice for professionals seeking an adhesive that meets the demands of various applications. Whether it's for commercial, residential, healthcare, or educational facilities, UZIN KE 2000 S is your go-to solution for exceptional results.

For more information on UZIN KE 2000 S and to see the complete range of UZIN products, please visit our website at www.us.uzin.com

